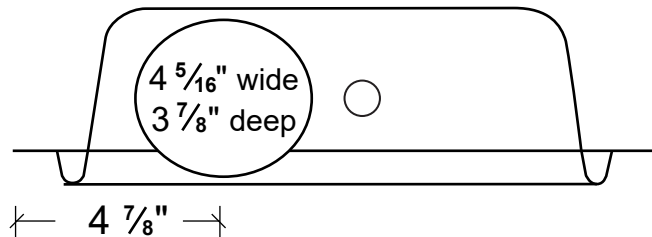
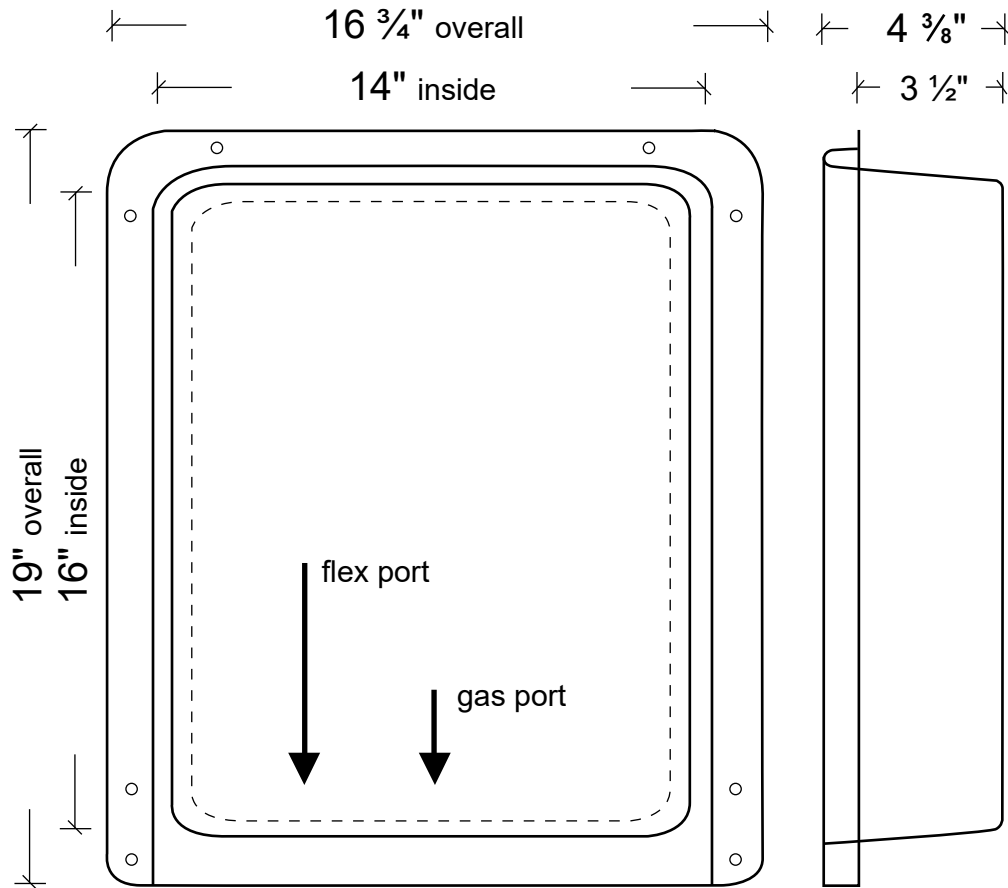


# Product Specification Sheet

## Model 3D

SKU DB-3D



Bottom Panel View

- 22 gauge aluminized steel weighing 4.12 pounds each
- Lower port measures  $4 \frac{1}{8}$ " with very slight oval shape
- Distance from nailing flange to rear of box is  $3 \frac{1}{2}$ "
- Overall measurements: 19" h x  $16 \frac{3}{4}$ " w x  $4 \frac{3}{8}$ " deep
- Inside measures 14" wide x 16" tall
- Six units per carton, 36 cartons per pallet, ships as a class 70

Manufactured By:  
In-O-Vate Technologies, Inc.  
250 S. Central Blvd. Suite 207  
Jupiter, FL 33458 USA  
(888) 443-7937