

Save Space • Save Energy • Reduce Fire Hazard

Protect Transition Duct

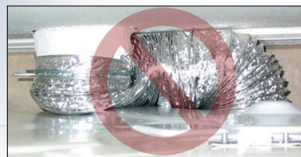


Today, you can place the dryer flush against the wall without crushing the exhaust hose or restricting airflow.

Install the Dryerbox® for more spacious, more efficient and safer homes.

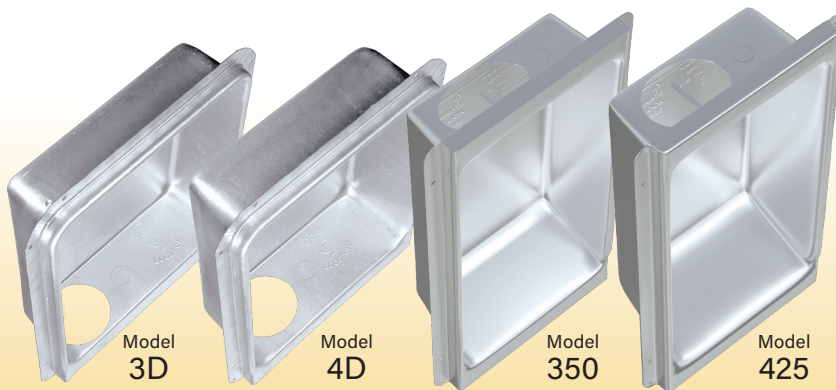
- Eliminate One Elbow
- Gain 6' of Allowable Duct Run
- Reduce Call Backs

Protect Transition Hose Neatly in the Wall



Unprotected Hose is a Fire Hazard

Model 480 — 22 Gauge Aluminized Steel Shown Painted



NEW
Model 480

Exhaust Direction	Wall Size	Model Number
Both	2x6	DB-480
Upward	2x6	DB-425
Upward	2x4	DB-350
Downward	2x6	DB-4D
Downward	2x4	DB-3D

Finish the Laundry Right

Protecting flex hose lessens the risk of lint buildup, provides energy savings by removing the kinks usually found in the exhaust hose, and makes for a simpler, more professional looking finish.



888-443-7937

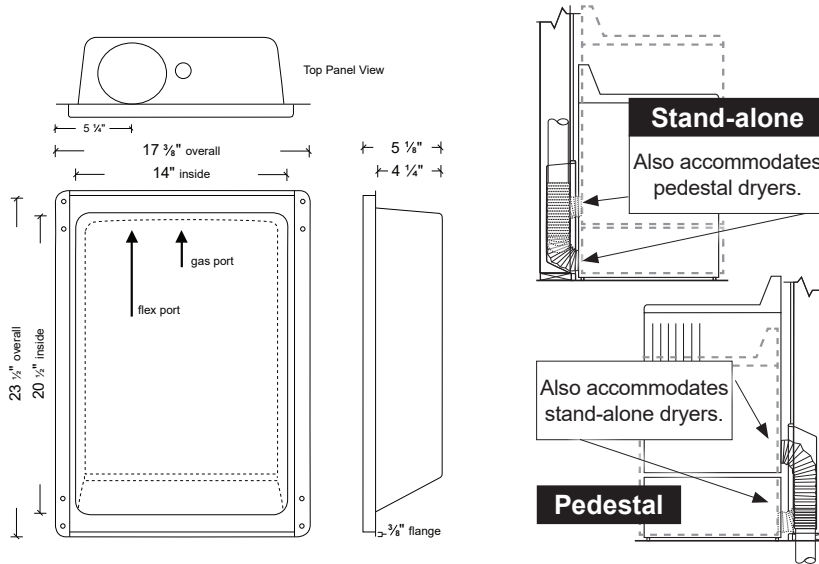
250 South Central Boulevard • Suite 207 • Jupiter FL 33458-8812 • Fax: 561-745-9723

www.Dryerbox.com



Technical Product Specifications

480 - Up, Down / Pedestal, Stand-alone



Model Number	Wall Size	Exhaust Direction
480	2X6	Up & Down
425	2X6	Upward
350	2X4	Upward
4D	2X6	Downward
3D	2X4	Downward

Performance Data

For Use:

- Dryer hose receptacle
- Doubles as gas connection receptacle
- Meets code requirements as a clean-out

Materials:

- Model 480, 425 and 350 deep drawn with .028 aluminized steel (22 gauge)
- Model 4D and 3D deep drawn with .031 aluminized steel (22 gauge)
- UL Classified for use in a one hour wall assembly (UL System # W-L-7129)



Cabinets

For Use in Penetration Firestop Systems
See UL Directory of Products Certified for
Canada and UL Fire Resistance Directory

<25XC>

Unit Weight:

- Model 480: 7.5 lbs.
- Model 425: 4.5 lbs.
- Model 350: 4.0 lbs.
- Model 4D: 5.25 lbs.
- Model 3D: 4.75 lbs.

General Information

Benefits:

- Locate the dryer right up against the wall
- Flex is protected from getting crushed
- Lint build-up is minimized
- Efficiency is increased...clothes dry faster
- Laundry room appears larger to prospects
- Reduces the fire hazard
- Reduces mold potential in the wall

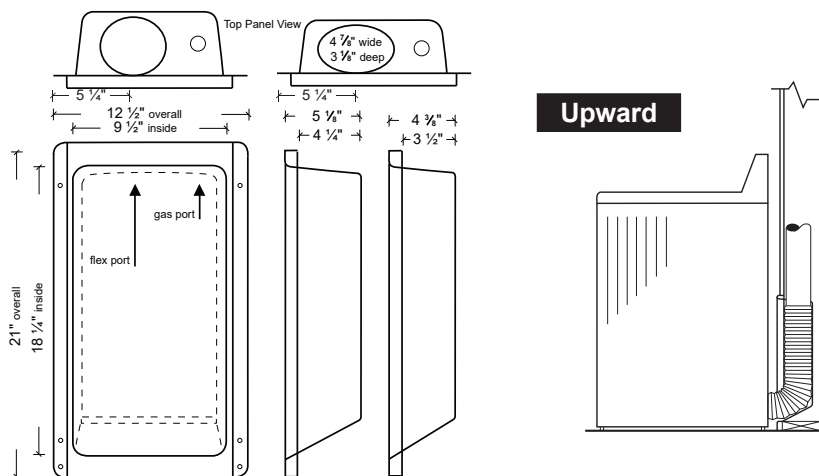
Features:

- No trim-ring piece is needed
- Elbow eliminator...gain 5 foot of duct run
- Surface is paintable, no masking needed
- Convenient Duct Support Tab

Manufactured By

InOvate Technologies, Inc.
250 S. Central Blvd. Suite 207
Jupiter, FL 33458
Phone: (888) 443-7937
Fax: (561) 745-9723
www.dryerbox.com

425 / 350 - Upward Venting



4D / 3D - Downward Venting

